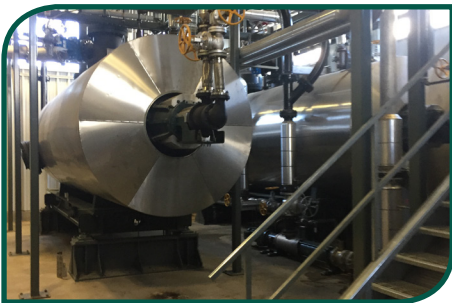


Lethbridge Biogas LP

Alberta, Canada



Electrical output: 2.8 MW | Commissioning: 2013 | Cofermentation AD plant with thermal hydrolysis unit



Technical data

- **3 Prestorage Tanks:** 2x 1,231 m³, 1x 361m³
Mixers: 2x 1 PlanET eco[®] Turbo, 1x 2 PlanET eco[®] Turbo
- **3 Digesters:** 3x 3,926 m³
Mixers: 4 PlanET eco[®] Mix
- **1 Digestate Storage:** 5,645 m³
Mixers: 3 PlanET eco[®] Mix
- **Dry Feeding System:** 1x PlanET Vario 74 m³, liquid feeding system: PlanET eco[®] Flow
- **Thermal Hydrolysis:**
Operating parameter: 180 °C @ 10bar
Hopper: 1x 55m³ receiving hopper
Breaker: 30 t/h, heavy duty
Reactor: 2x 16,000 liter
Hot Oil System: 1x 3,000 kW_{th}
- **CHP:** 2x 2G 1.425 MW_e engines
- **Substrates:** Sterilized Specified Risk Material (SRM), slaughterhouse waste, food waste, Fats Oil and Grease (FOG), whey, residues from potato, dairy, hog, poultry manure

PlanET Biogas Solutions

56-113 Cushman Rd.

St. Cath., ON, Canada L2M 6S9

T - 905-935-1969

F - 905-935-7498

info@planet-biogas.ca

www.planet-biogas.com